

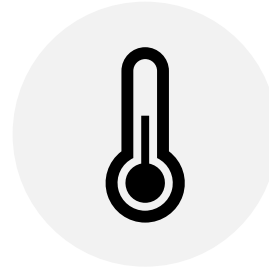


What's New for School Year 2020-2021

AUGUST 20, 2020

Starting the Day

Before You Arrive at School



Students and Staff

Take your temperature



www.sfdesales.org

Students and Staff

Complete the Health Monitoring Form



Students and Staff

Put on your mask
And go to school



Students and Staff

Screening at school will be done before you enter the building.

STAFF ARRIVE EARLY

WWW.SFDESALES.ORG

Website Information



Reopening Plan



Health Monitoring Forms



Staff Contacts



Other Information

School Calendar

Forms

ASL class information

Photos

Cleaning, Packing & Deliveries



Classroom and Therapy rooms packed up

Everything in hallways so rooms could be cleaned



So many deliveries and they are still coming.....

New Supplies



Touchless
thermometer for
screenings

Food bags to deliver
hot and cold food
items to classroom



SOME PPEs
Gowns, masks, face shields,
goggles.....

New Supplies

PPE Model



Goggles

Clear masks, SFDS masks and more

UV cleaner
For equipment



New Supplies

- ▶ Dividers
 - ▶ For tables
 - ▶ For classrooms
- ▶ Mats
 - ▶ Entries for shoes
- ▶ Sanitizing stations
 - ▶ No touch dispensers
- ▶ Signs and Tape
 - ▶ Social distancing
 - ▶ Directional Flow





Supplies of the Past

Stored in Cafeteria



Classrooms now.....

Student Desks



Teacher Desk



Air Purifier





Teaching and Learning.....

- Individual materials
 - chair caddies
 - pencil cases
 - manipulatives

- Continued combination of Online and hard copy resources
 - RETAINING AND MAINTAINING

- Aligning goals with NYS Standards

- Incorporating virtual Social Skills
 - increase student opportunity for peer interaction

Shared Responsibilities

- Reviewing IEP goals
 - At the beginning of the year and connecting them with units of study
- Best practices for remote learning
 - from both the home and school perspective
- Maintaining student materials
 - both remote and in person to be best prepared if we must return to full remote

Entrances – Main Lobby & Awning

Main Lobby Entrance



Awning Entrance



Student Arrival – bus & drop off



Student Awning entrance



Cleared
Temperature Form
Can go to class

Not Cleared
Temperature high
Form NOT completed
Go to Nurse's office



Stairs

Stairway A

Down

Specifically for
For Nurse's Office

Stairway B – UP

Stairway C – DOWN

Stairway D - UP



DOWN- Red

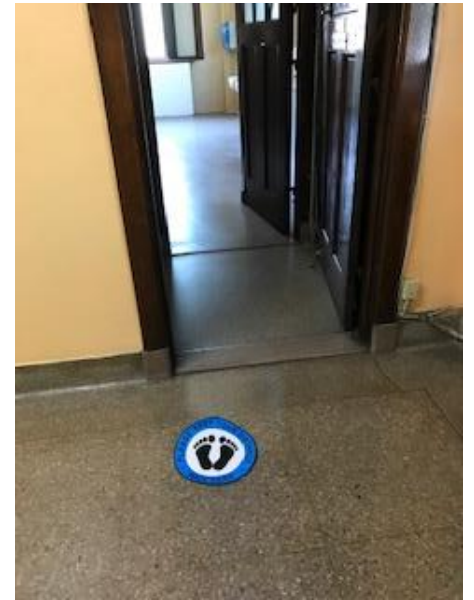
UP - Yellow

Elevator & Bathrooms



Elevator
Waiting spots
Spacing
Restrictions

Bathrooms
Waiting spots
Scheduled
Spacing
Assigned



IEPS Meetings Evaluations

Waiting on guidelines from the CSE

CPSE did use remote evaluations this summer

IEP meetings will happen

Probable/Maybe

Evaluations for admission or
Triennials remote

Meetings on the phone

Additional Items for Families

Yearly paperwork is still
necessary

School Bus Guidelines

Parent Teacher night

Meal Program

Meals

SFDS is responsible to provide meals for all enrolled students

Prepackaged meals will be available daily or weekly

More details will be found on the school's website

Contact social worker with any questions



Additional Items for Staff

New touchless time clock system
with card reader

Continue to check your work emails
regularly

Reopening information

Documents

Additional questions – please email
them to your supervisor

QUESTIONS from PARENTS



Type questions in the
CHAT BOX

Thank You all!

Gracias

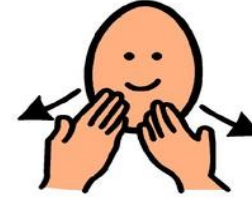
شکرا

آپ کا شکریہ

mèsi

ধন্যবাদ

thank you



21

Thank you all

